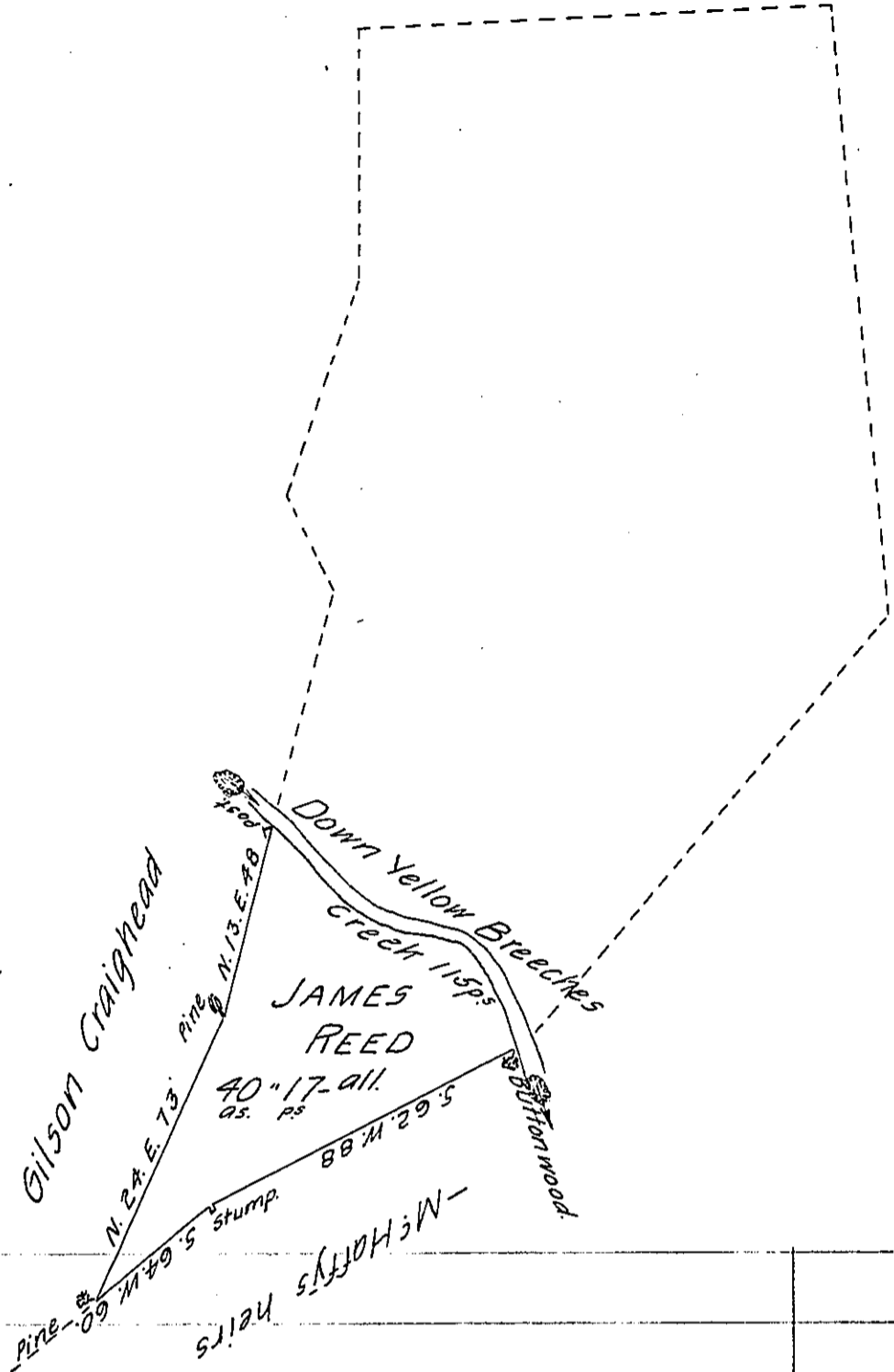


Courses & Distances Down  
Yellow Breeches Creek from  
the Post.

- S. 76. E. 17.
- S. 66. E. 32.
- N. 74. E. 21
- S. 48. E. 28.
- S. 14. E. 17 to Butterwood.
- 115



The Draught of a tract of Land situate in Middleton Township, Cumberland County, containing Forty Acres, and Seventeen perches, and allowance of Six ~~th~~ Cent for roads &c. It being part of a larger tract Survey'd upon a Warrant granted to James Reed, Dated the 10<sup>th</sup> day of June 1762. Surveyed and divided off the 2<sup>nd</sup> day of November 1801.

W<sup>m</sup> Ramsey, D: S.

To Samuel Cochran, Esq<sup>r</sup>  
Surveyor Gen<sup>l</sup> of Pennsy<sup>a</sup>

IN TESTIMONY that the above is a copy of the original remaining on file in the Department of Internal Affairs of Pennsylvania, made conformably to an Act of Assembly approved the 16th day of February, 1833, I have hereunto set my Hand and caused the Seal of said Department to be affixed at Harrisburg, this sixth day of July 1906.

*Francis P. Brown*  
Secretary of Internal Affairs.